



Model HDR - RF

Manual Addendum

(To be used in conjunction with HDRS-RF Manual)

For Gas, Oil and Combination burners

With and without Low NOx Flue Gas
Recirculation (FGR)



Manual Part No. 950071
September, 2014
www.webster-engineering.com

© 2014 All Rights Reserved

TABLE OF CONTENTS

A.	General Information	2
B.	Component Description	8
C.	Setup & Adjustment	12

Ratings sheets. These represent the minimum size that can be safely used with this burner. Contact the factory if the furnace is smaller than the dimensions given. In many cases, other sizes may work depending on the fuel being used.

READ AND SAVE THESE INSTRUCTIONS FOR REFERENCE.

A. General Information

This addendum covers the Model HDR-RF Combustion Head from Webster Engineering & Manufacturing Co. This combustion head is different from the combustion head used on the HDRS-RF burner and offers the capability to fire into different furnace configurations. All other attributes of the burner package are as defined in the HDRS-RF burner manual (Part No. 950062) and related documentation, including the Wiring Diagram, Fuel Trains and other manuals like the Flame Safeguard Manual.

WARNING

Read and understand all manual information before doing any work. This includes this manual, the HDRS-RF manual and the Flame Safeguard manual. Failure to properly understand how to adjust and set up this equipment could result in property damage, injury or death.

The Model HDR-RF is offered in a wider size range than the HDRS-RF, and these differences are covered in this addendum. Other variations are also addressed in this addendum.

1. Model Number Configuration

Figure A-1 shows the model configuration for the HDR-RF product, and the offering variation. This is the model number that will appear on documents related to the burner, including the nameplate, although it may be truncated to fit available space.

The input rating is given in millions of BTUs' instead of Boiler HP as the HDRS-RF uses. This is a more common rating system for Watertube boilers.

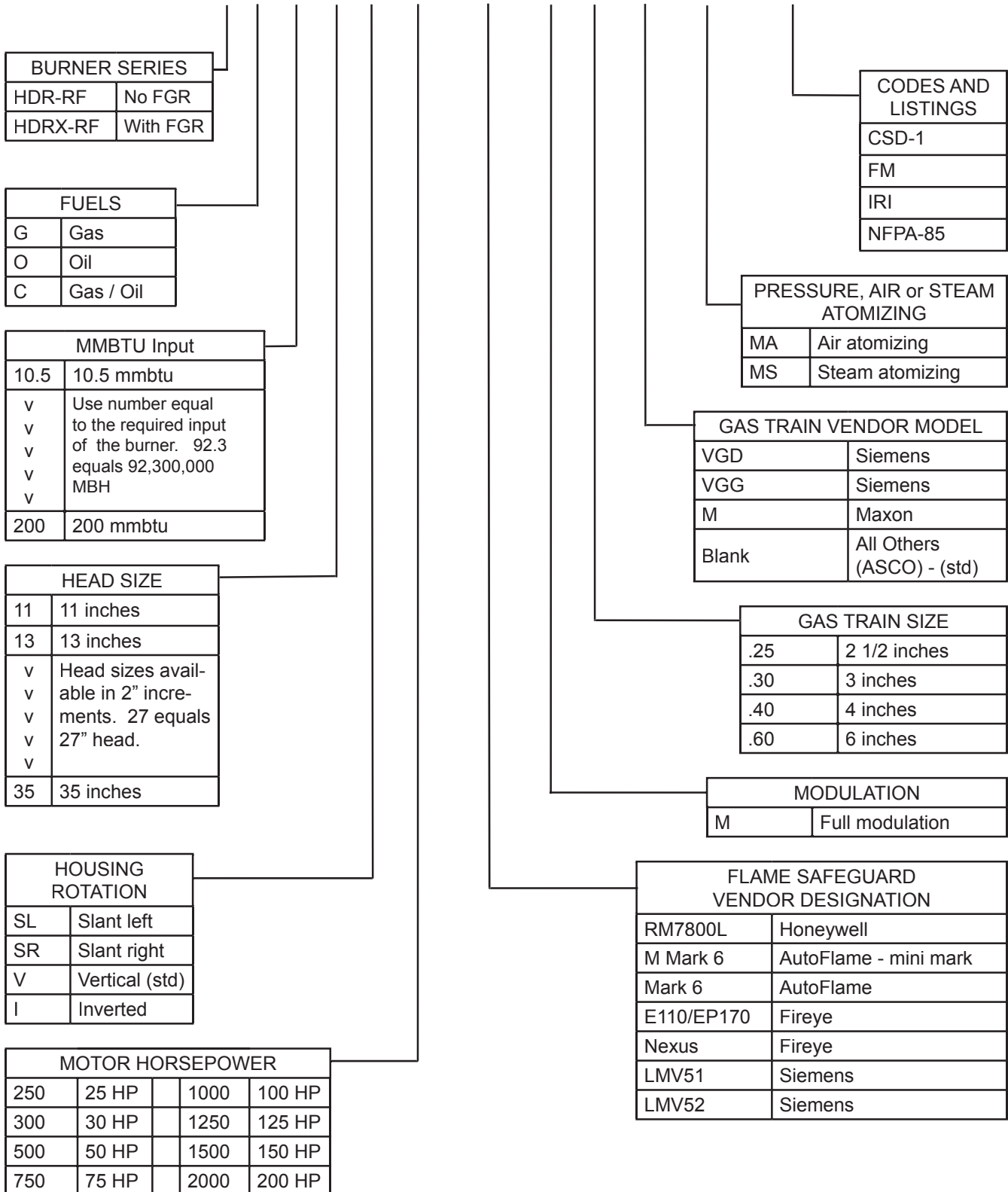
2. Dimensions and ratings

The Dimension and Ratings sheets for the Model HDR-RF are broken out by Watertube and Firetube application sheets attached. These provide the general sizing, dimensions and ratings for different applications. If there is a requirement for low NOx or altitude, the burner ratings will be reduced.

The minimum furnace size is given on the Dimensions and

MODEL HDR(X) BURNER MODEL CONFIGURATION FIGURE A-1

HDR-RFC-92.3-27 SL 1500 MARK6 -M .25 VGD -MA -UL/CSD-1

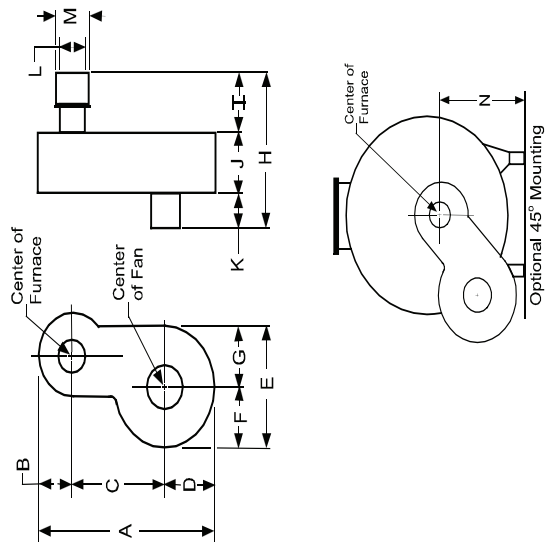


The above represents the common model designations.
Contact the factory for other options and special applications.

Figure A-2 DIMENSIONS and RATINGS for Webster Model HDR-RF - for Watertube Applications

Firing Head Size (ID) and Fan size (diameter)		13				15				17				19				21			
		HEAD	11	13	15	17	19	21	23	25	27	30	33	36.5	40.2	44.5	49	53.7			
RPM	3450	3450	3450	3450	3450	3450	3450	3450	3450	3450	3450	3450	3450	3450	3450	3450	3450	3450			
FAN	15	16.5	13.5	15	16.5	18.2	22.2	24.5	27	30	33	36.5	40.2	44.5	49	53.7	58.4	63.1			
A	55.1	57.9	52.1	55.1	57.9	61	65.8	69.3	73	77	81.2	85.1	89.2	93.2	97.2	101.4	105.7	110.1			
B	15.2	15.2	15.2	15.2	15.2	15.2	15.2	15.2	15.2	15.2	15.2	15.2	15.2	15.2	15.2	15.2	15.2	15.2			
C	28.5	30.2	26.6	28.5	30.2	32	33.8	35.6	37.4	39.2	41.1	43.1	45.1	47.1	49.1	51.1	53.1	55.1			
D	11.4	12.5	10.3	11.4	12.5	13.8	16.8	18.5	20.4	22.6	24.9	27.5	30.4	33.6	37.1	40.8	44.8	49.1			
E	22.9	25.1	20.6	22.9	25.1	27.6	33.3	36.9	38.6	45.2	49.8	54.8	60.1	65.7	71.6	77.8	84.3	91.1			
F	10.2	11.2	9.2	10.2	11.2	12.3	14.8	16.3	18.2	20.1	22.2	24.4	26.9	29.6	32.5	35.6	38.9	42.4			
G	12.7	13.9	11.4	12.7	13.9	15.3	18.5	20.6	23.1	25.1	27.6	30.5	33.6	36.9	40.4	44.1	48.1	52.3			
H	59.6	59.6	59.6	59.6	59.6	63.1	66.7	70.5	74.5	78.7	83.1	87.7	92.5	97.5	102.7	108.1	113.7	119.5			
I	22.0	22	22	22	22	22	22	22	22	22	22	22	22	22	22	22	22	22			
J	18.5	18.5	18.5	18.5	18.5	18.5	18.5	18.5	18.5	18.5	18.5	18.5	18.5	18.5	18.5	18.5	18.5	18.5			
K	13.1	13.1	13.1	13.1	13.1	13.1	13.1	13.1	13.1	13.1	13.1	13.1	13.1	13.1	13.1	13.1	13.1	13.1			
L	6.0	6.0	6.0	6.0	6.0	6.0	6.0	6.0	6.0	6.0	6.0	6.0	6.0	6.0	6.0	6.0	6.0	6.0			
M	11.0	11.0	11.0	11.0	11.0	11.0	11.0	11.0	11.0	11.0	11.0	11.0	11.0	11.0	11.0	11.0	11.0	11.0			
N	38.1	38.4	37.8	38.1	38.4	38.8	39.6	40.1	40.6	40.9	41.5	42.1	42.8	43.5	44.4	45.3	46.3	47.4			

Firing Head Size (ID) and Fan size (diameter)		23				25				27				29				31				33				35			
		HEAD	23	25	27	29	31	33	35	37	39	41	43	45	47	49	51	53	55										
RPM	1745	1745	1745	1745	1745	1745	1745	1745	1745	1745	1745	1745	1745	1745	1745	1745	1745	1745											
FAN	33	36.5	40.2	44.5	36.5	40.2	44.5	36.5	40.2	44.5	49	53.7	58.4	63.1	67.9	72.7	77.6	82.5											
A	98.3	103.7	109.3	115.4	104.2	109.5	130.2	117.9	123.7	130.2	136.7	143.4	150.1	156.8	163.5	170.2	176.9	183.6											
B	24.1	24.1	24.1	24.1	24.2	24.2	24.2	24.2	24.2	24.2	24.2	24.2	24.2	24.2	24.2	24.2	24.2	24.2											
C	49.3	52.1	55	57.8	52.5	55.1	72.5	66.2	69.3	72.5	75.6	78.7	81.8	84.9	88.0	91.1	94.2	97.3											
D	24.9	27.5	30.2	33.5	27.5	30.2	33.5	27.5	30.2	33.5	36.9	40.3	43.7	47.1	50.5	53.9	57.3	60.7											
E	49.8	55	60.5	67	54.9	60.5	67	54.9	60.5	67	73.7	80.5	87.3	94.1	100.9	107.7	114.5	121.3											
F	22.2	24.5	26.9	29.8	24.4	26.9	29.8	24.4	26.9	29.8	32.8	35.8	38.8	41.8	44.8	47.8	50.8	53.8											
G	27.6	30.5	33.6	37.2	30.5	33.6	37.2	30.5	33.6	37.2	40.9	44.6	48.3	52.0	55.7	59.4	63.1	66.8											
H	73.8	75.4	79.3	79.4	75.4	77.2	80.3	85.1	87.9	88.8	89.5	88.8	88.8	88.8	88.8	88.8	88.8	88.8											
I	22	22	22	22	22	22	22	22	22	22	22	22	22	22	22	22	22	22											
J	24.5	24.5	24.5	24.5	24.5	24.5	24.5	24.5	24.5	24.5	24.5	24.5	24.5	24.5	24.5	24.5	24.5	24.5											
K	18.7	20.3	24.2	24.3	20.3	22.1	25.2	21.5	24.3	25.2	25.9	26.6	27.3	28.0	28.7	29.4	30.1	30.8											
L	8.6	8.6	8.6	8.6	8.6	8.6	8.6	8.6	8.6	8.6	8.6	8.6	8.6	8.6	8.6	8.6	8.6	8.6											
M	23	23	23	23	25	25	25	27	27	27	27	27	27	27	27	27	27	27											
N	54.3	55.0	55.9	56.9	59.3	60.0	61.0	59.3	60.0	61.0	62.0	63.0	64.0	65.0	66.0	67.0	68.0	69.0											



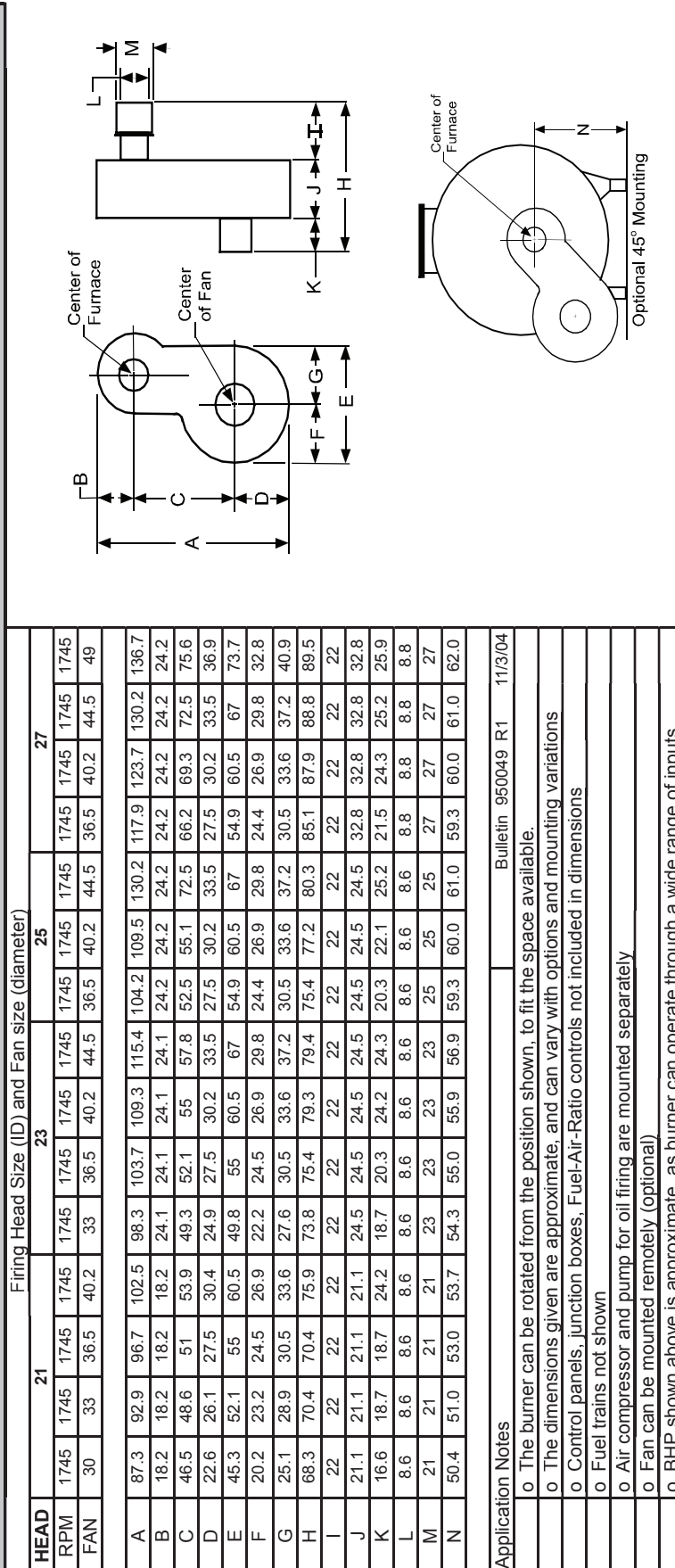
Application Notes

- o The burner can be rotated from the position shown, to fit the space available
- o The dimensions given are approximate, and can vary with options and mounting variations
- o Control panels, junction boxes, Fuel-Air-Ratio controls not included in dimensions
- o Fuel trains not shown
- o Air compressor and pump for oil firing are mounted separately
- o Fan can be mounted in remote location (optional)
- o Fan can be mounted in remote location (optional)

Bulletin 950050, R1 11/13/04

Figure A-3 DIMENSIONS and RATINGS for Webster Model HDR-RF - For Firetube Applications Page 2 of 2

HEAD	Firing Head Size (ID) and Fan size (diameter)																	
	11			13			15			17			19					
RPM	3450	1745	1745	3450	1745	1745	3450	1745	1745	3450	1745	1745	3450	1745	1745	3450	1745	1745
FAN	15	16.5	13.5	15	16.5	18.2	22.2	24.5	27	30	33	16.5	18.2	27	30	33	36.5	27
A	55.1	57.9	52.1	55.1	57.9	61	65.8	69.3	73	77	81.2	82.8	87.3	92.9	97.2	82.2	86.7	92.9
B	15.2	15.2	15.2	15.2	15.2	15.2	15.2	15.2	15.2	15.2	15.2	18.2	18.2	18.2	18.2	18.2	18.2	18.2
C	28.5	30.2	26.6	28.5	30.2	32	33.8	35.6	37.4	39.2	41.1	34.4	36.6	44.2	46.5	48.6	45.9	48.6
D	11.4	12.5	10.3	11.4	12.5	13.8	16.8	18.5	20.4	22.6	24.9	12.5	13.8	20.4	22.6	26.1	20.4	22.6
E	22.9	25.1	20.6	22.9	25.1	27.6	33.3	36.9	38.6	45.2	49.8	25.1	27.6	40.8	45.3	49.8	40.8	45.2
F	10.2	11.2	9.2	10.2	11.2	12.3	14.8	16.3	18.2	20.1	22.2	11.2	12.3	18.2	20.2	22.2	24.4	20.2
G	12.7	13.9	11.4	12.7	13.9	15.3	18.5	20.6	20.4	25.1	27.6	13.9	15.3	22.6	25.1	27.6	30.5	22.6
H	59.6	59.6	59.6	59.6	59.6	63.1	66.7	68.5	69.6	75.4	80.3	63.1	66.7	82.2	85.7	88.3	69.1	70.4
I	22.0	22	22	22	22	22	22	22	22	22	22	22	22	22	22	22	22	22
J	18.5	18.5	18.5	18.5	18.5	18.5	18.5	18.5	18.5	18.5	18.5	21.1	21.1	21.1	21.1	21.1	21.1	21.1
K	13.1	13.1	13.1	13.1	13.1	16.6	10.2	12	13.1	16.6	16.6	16.6	13.1	16.6	17.4	18.7	13.1	16.6
L	6.0	6.0	6.0	6.0	6.0	6.0	6.0	6.0	6.0	6.0	6.0	6.0	6.0	6.0	6.1	6.1	6.1	6.1
M	11.0	11.0	13	13	13	13	13	13	13	13	13	15	15	15	15	17	17	19
N	38.1	38.4	37.8	38.1	38.4	38.8	39.6	40.1	40.6	40.9	41.5	46.1	46.5	49.6	50.2	50.9	44.4	47.5



HEAD	Firing Head Size (ID) and Fan size (diameter)														
	21			23			25			27					
RPM	1745	1745	1745	1745	1745	1745	1745	1745	1745	1745	1745	1745	1745	1745	1745
FAN	30	33	36.5	40.2	33	36.5	40.2	44.5	36.5	40.2	44.5	36.5	40.2	44.5	49
A	87.3	92.9	96.7	102.5	98.3	103.7	109.3	115.4	104.2	109.5	130.2	117.9	123.7	130.2	136.7
B	18.2	18.2	18.2	18.2	24.1	24.1	24.1	24.1	24.2	24.2	24.2	24.2	24.2	24.2	24.2
C	46.5	48.6	51	53.9	49.3	52.1	55	57.8	52.5	55.1	72.5	66.2	69.3	72.5	75.6
D	22.6	26.1	27.5	30.4	24.9	27.5	30.2	33.5	27.5	30.2	33.5	27.5	30.2	33.5	36.9
E	45.3	52.1	55	60.5	49.8	55	60.5	67	54.9	60.5	67	54.9	60.5	67	73.7
F	20.2	23.2	24.5	26.9	22.2	24.5	26.9	29.8	24.4	26.9	29.8	24.4	26.9	29.8	32.8
G	25.1	28.9	30.5	33.6	27.6	30.5	33.6	37.2	30.5	33.6	37.2	30.5	33.6	37.2	40.9
H	68.3	70.4	70.4	75.9	73.8	75.4	79.3	79.4	75.4	77.2	80.3	85.1	87.9	88.8	89.5
I	22	22	22	22	22	22	22	22	22	22	22	22	22	22	22
J	21.1	21.1	21.1	24.5	24.5	24.5	24.5	24.5	24.5	24.5	24.5	24.5	32.8	32.8	32.8
K	16.6	18.7	18.7	24.2	18.7	20.3	24.2	24.3	20.3	22.1	25.2	21.5	24.3	25.2	25.9
L	8.6	8.6	8.6	8.6	8.6	8.6	8.6	8.6	8.6	8.6	8.6	8.6	8.8	8.8	8.8
M	21	21	21	23	23	23	23	23	25	25	25	25	27	27	27
N	50.4	51.0	53.0	53.7	54.3	55.0	55.9	56.9	59.3	60.0	61.0	59.3	60.0	61.0	62.0

Application Notes

- o The burner can be rotated from the position shown, to fit the space available.
- o The dimensions given are approximate, and can vary with options and mounting variations
- o Control panels, junction boxes, Fuel-Air-Ratio controls not included in dimensions
- o Fuel trains not shown
- o Air compressor and pump for oil firing are mounted separately
- o Fan can be mounted remotely (optional)
- o BHP shown above is approximate, as burner can operate through a wide range of inputs

Bulletin 950049 R1 11/3/04

B. Component Description

See the component layout shown in the HDRS-RF manual. The combustion head is different in that it has parallel gas spuds and less swirl applied to the air stream. Figure C-1 shows the detail of this firing head including the burner drawer, refractory and gas manifold. Figure B-1 shows a typical HDR-RF combustion head assembly.

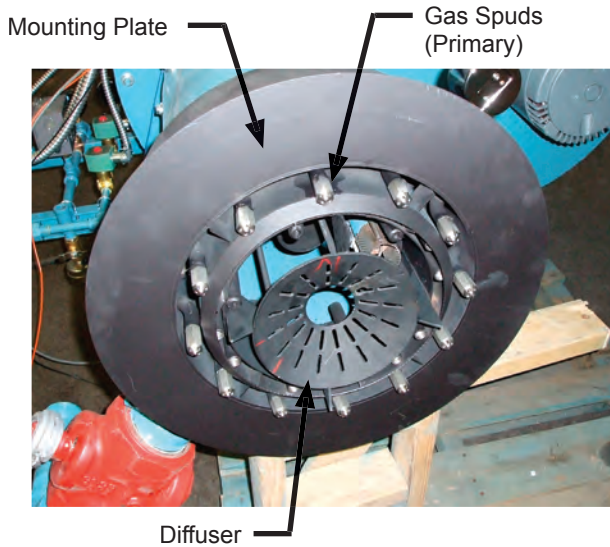


Figure B-1 Combustion Head Assembly

1. Refractory Shape

The refractory front plate for the HDR-RF burner has a unique shape as shown on Figure B-1. There is a notch in the surface close to the burner head that is combined with special gas spuds to form the flame front and retains the flame. This refractory must be in good mechanical condition for the burner to work properly.

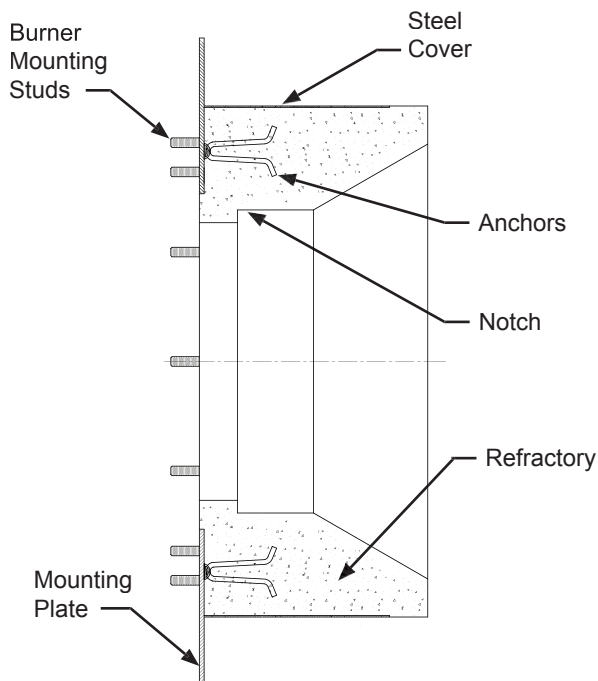


Figure B-2 Refractory Front Plate

The outer ring of orifices are used to provide flame retention on the refractory, and their position is critical in relation to the refractory.

2. Dual Gas Housing

Some applications require multiple gas fuels that are contained in separate housings with independent orifices. These burner heads will have double the number of gas orifices to accommodate both fuels, with all orifices terminating in the same position to support a common flame front.

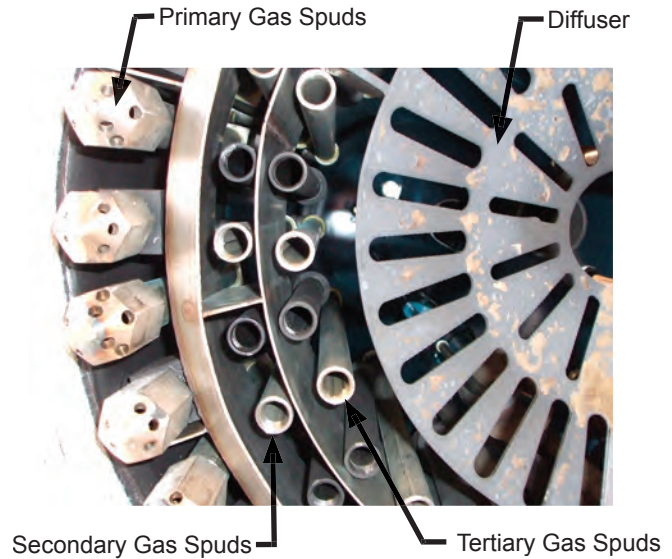


Figure B-3 Nozzle Arrangement

3. Oil Gun

The oil gun (with oil nozzle) can be easily removed from the burner by disconnecting the oil lines and pulling it apart. See Figure B-4. The position of the oil nozzle is adjusted by backing off the set screws that lock the pipes to the spacer, and sliding the pipes in and out. The spacer will provide the correct location when re-installed. If the burner will operate on gas for longer time intervals, the oil gun should be removed to prevent the oil from solidification in the nozzle.

4. Burner Drawer

The burner drawer holds the diffuser, pilot, scanner and oil gun tube. It can be removed from the burner by disconnecting the mounting bolts on the back flange and pulling it out.

CAUTION

Use care in handling burner drawer, especially the ignition cable insulators, which can easily break.

5. FGR System

Figure B-6 shows the FGR sizing criteria for the full range of products offered by the HDR-RF line. For complete

details on selection and sizing the FGR system, refer to the HDRS-RF manual.

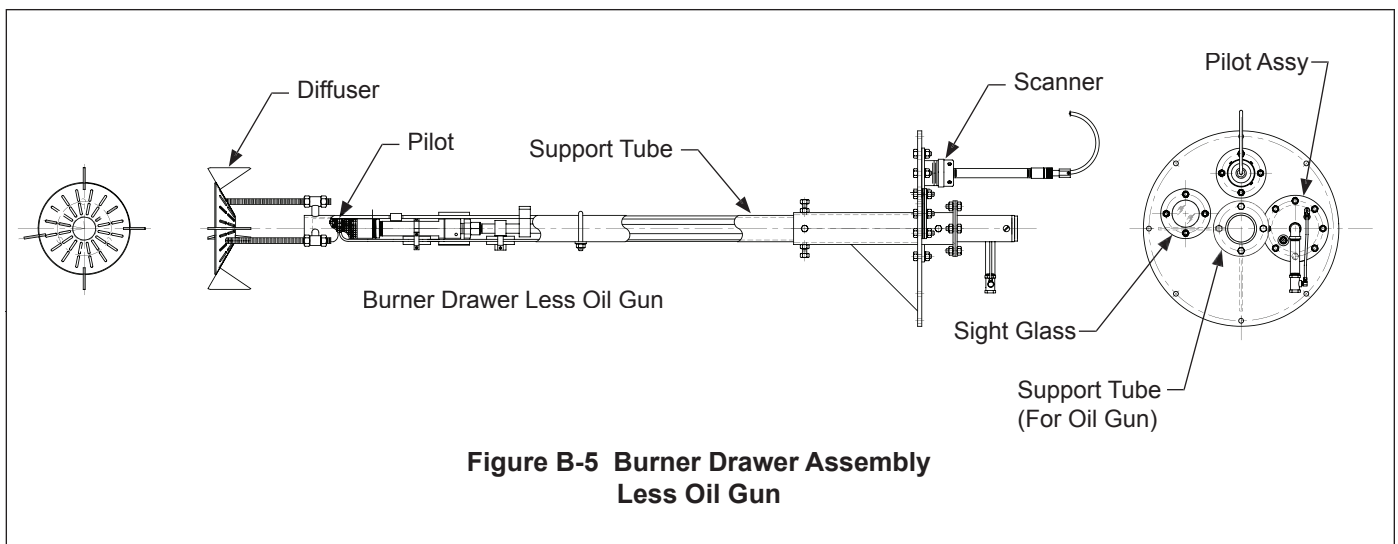
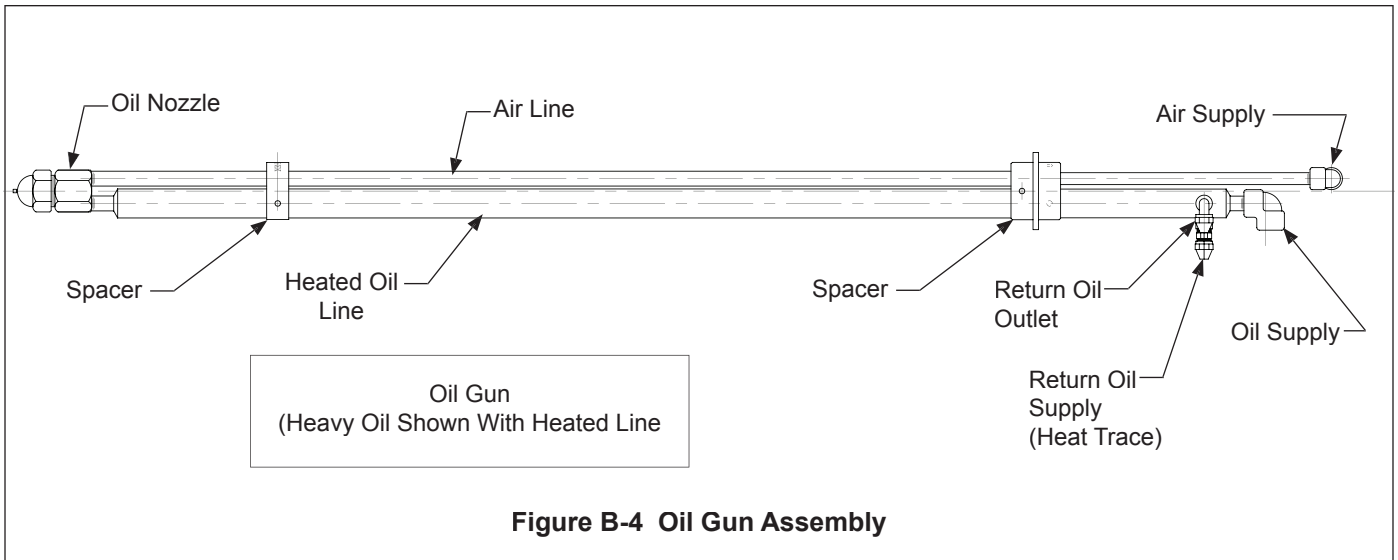


Figure B-6
FGR Sizing Criteria

BHP	Max inlet press	Pressure Drop per 100' of Duct									
		4"	5"	6"	8"	10"	12"	14"	16"	18"	20"
60 ppm NOx Level											
200	1.00	1.4	0.4	0.1							
250	1.00	2.1	0.6	0.2							
300	1.25	3.1	0.9	0.3							
350	1.25	4.2	1.2	0.5							
400	1.25	5.5	1.6	0.6							
450	1.25	7.0	2.0	0.8	0.2						
500	1.50		2.5	0.9	0.2						
550	1.50		3.0	1.1	0.2						
600	1.50		3.6	1.3	0.3						
700	1.50		4.9	1.8	0.4						
750	1.50		5.6	2.1	0.5						
800	1.50		6.4	2.4	0.5	0.2					
900	2.00		8.1	3.0	0.7	0.2					
1000	2.00			3.7	0.8	0.2					
1100	2.00			4.5	1.0	0.3					
1200	2.00			5.4	1.2	0.4					
1300	2.00			6.3	1.4	0.4	0.2				
1400	2.00			7.3	1.6	0.5	0.2				
1500	2.00			8.4	1.8	0.5	0.3				
1600	2.00				2.1	0.6	0.3				
1700	2.00				2.4	0.7	0.3				
1800	2.50				2.6	0.8	0.3				
2000	2.50				3.3	1.0	0.4				
2200	2.50				3.9	1.2	0.5				
2300	2.50				4.3	1.3	0.6	0.3			
2400	2.50				4.9	1.4	0.6	0.3			
2500	2.50				5.1	1.5	0.7	0.3			
2600	2.50				5.5	1.6	0.7	0.3			
30 ppm NOx Level											
200	1.00			1.9	0.4	0.1					
250	1.00			2.9	0.6	0.2					
300	1.25			4.2	0.9	0.3					
350	1.25			5.8	1.3	0.4					
400	1.25			7.5	1.7	0.5	0.2				
450	1.25				2.1	0.6	0.3	0.1			
500	1.50				2.6	0.8	0.3	0.2			
550	1.50				3.1	0.9	0.4	0.2			
600	1.50				3.7	1.1	0.5	0.2			
700	1.50				5.1	1.5	0.7	0.3			
750	1.50				5.8	1.7	0.8	0.3			
800	1.50				6.6	2.0	0.9	0.4			
900	2.00				8.4	2.5	1.1	0.5			
1000	2.00					3.1	1.3	0.6			
1100	2.00					3.7	1.6	0.7			
1200	2.00					4.4	1.9	0.9			
1300	2.00					5.2	2.3	1.0	0.5	0.3	
1400	2.00					6.0	2.6	1.2	0.6	0.4	
1500	2.00					6.9	3.0	1.4	0.7	0.4	
1600	2.00					7.9	3.4	1.6	0.8	0.5	
1700	2.00					8.9	3.9	1.8	0.9	0.6	0.4
1800	2.50						4.4	2.0	1	0.6	0.4
2000	2.50						5.4	2.5	1.3	0.8	0.5
2200	2.50						6.5	3.0	1.5	1	0.6
2300	2.50						7.1	3.3	1.7	1	0.7
2400	2.50						7.7	3.6	1.8	1.1	0.7
2500	2.50						8.4	3.9	2	1.2	0.8
2600	2.50						9.1	4.2	2.1	1.3	0.9

BHP	Max inlet press	Pressure Drop per 100' of Duct									
		4"	5"	6"	8"	10"	12"	14"	16"	18"	20"
20 ppm NOx Level											
200	1.00			4.6	1.0	0.3					
250	1.00			7.2	1.6	0.5	0.2				
300	1.25				2.3	0.7	0.3				
350	1.25				3.1	0.9	0.4				
400	1.25				4.0	1.2	0.5	0.2			
450	1.25				5.1	1.5	0.7	0.3			
500	1.50				6.3	1.9	0.8	0.4	0.2		
550	1.50				7.6	2.3	1.0	0.5	0.2		
600	1.50					2.7	1.2	0.5	0.3		
700	1.50					3.7	1.6	0.7	0.4		
750	1.50					4.2	1.8	0.8	0.4		
800	1.50					4.8	2.1	1.0	0.5		
900	2.00					6.1	2.7	1.2	0.6		
1000	2.00					7.5	3.3	1.5	0.8		
1100	2.00						4.0	1.8	0.9		
1200	2.00						4.7	2.2	1.1		
1300	2.00						5.5	2.5	1.3	0.8	0.5
1400	2.00						6.4	2.9	1.5	0.9	0.6
1500	2.00						7.4	3.4	1.7	1.1	0.7
1600	2.00						8.4	3.8	2	1.2	0.8
1700	2.00							4.3	2.2	1.4	0.9
1800	2.50							4.9	2.5	1.6	1.0
2000	2.50							6.0	3.1	1.9	1.3
2200	2.50							7.3	3.7	2.3	1.5
2300	2.50							8.0	4.1	2.5	1.7
2400	2.50							8.7	4.4	2.8	1.8
2500	2.50							9.4	4.8	3.0	2.0
2600	2.50								5.2	3.2	2.1
		4"	5"	6"	7"	10"	12"	14"	16"	18"	20"

Figure B-6
FGR Sizing Criteria

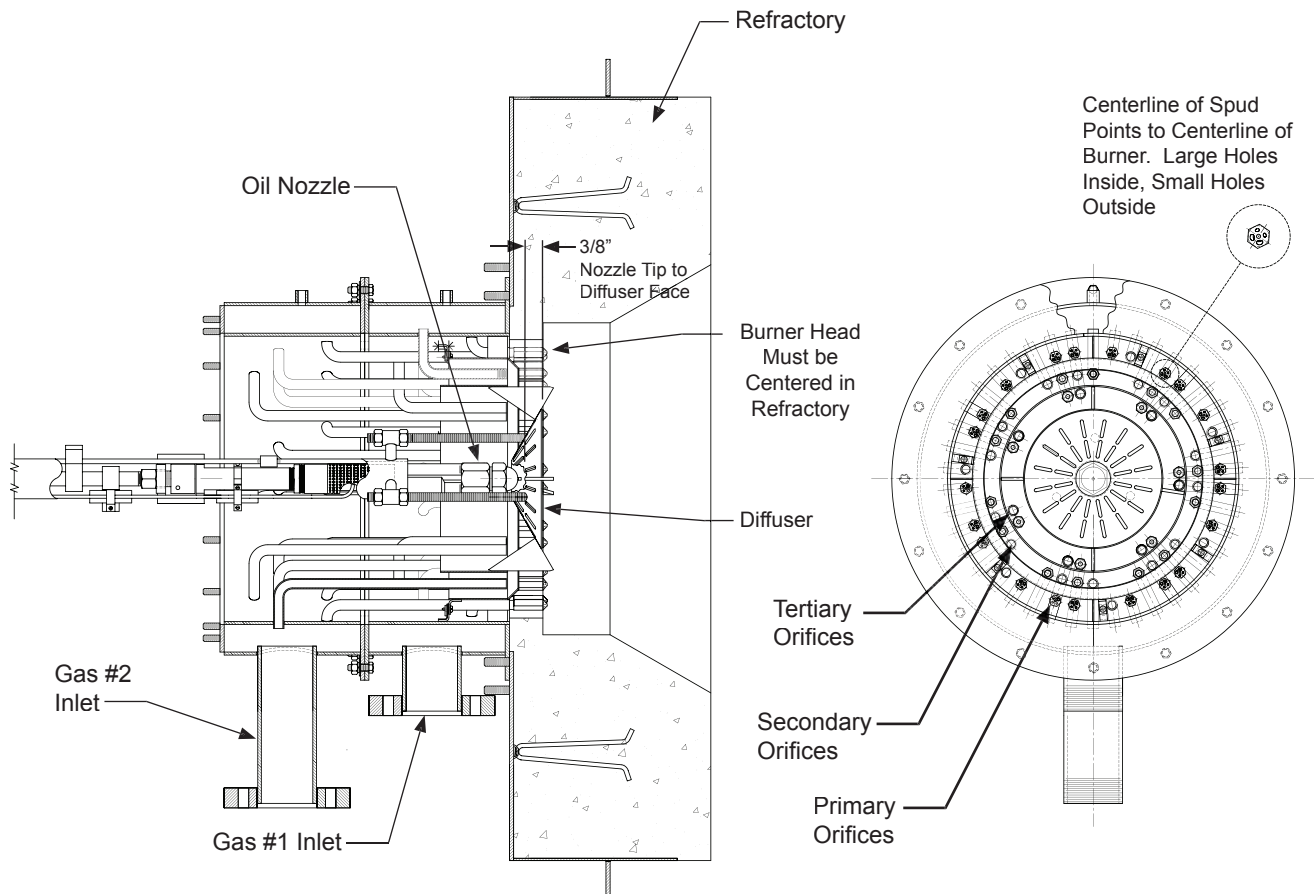
C. Setup and adjustment

1. Burner Drawer Setup

Figure C-1 shows the general arrangement of the burner, refractory and other critical burner components. A dual housing is shown.

The O.D. plane of the diffuser should line up with the tapered end of the primary gas spuds (outer row). The position of the diffuser is adjustable by moving the guide tube. This can be done while firing from outside the burner.

The oil nozzle position should be 3/8" behind the O.D. plane of the diffuser. The position of the oil nozzle is also adjustable from outside the burner while the burner is firing. These settings are starting points and the final settings will be determined during start-up.



**Figure C-1 Burner Housing Assembly
(Dual Housing Shown)**

2. Burner Adjustments

The Primary adjustment for oil firing is the position of the oil nozzle relative to the diffuser. This position should be maintained, especially if the diffuser positions adjusted for the gas fire. The register setting and excess air levels also impact the oil combustion.

For gas firing, the position of the diffuser relative to the gas spuds would be a primary adjustment. The register setting and excess air levels also impact the gas combustion. In some cases the gas spud arrangement may need to be adjusted to get proper mix for the furnace conditions. Refer to the HDRS-RF manual for complete adjustment and setup details.

WEBSTER COMBUSTION TECHNOLOGY
619 Industrial Road - Winfield, KS 67156
Phone: 620-221-7464 Fax: 620-221-9447
sales@webster-engineering.com
service@webster-engineering.com
www.webster-engineering.com

WARRANTY MATTERS AND EXCLUSION OF IMPLIED WARRANTIES

The following warranty applies: All Products manufactured by the Company are warranted to be free from defects in material and workmanship under normal use and service for a period of eighteen months from the date of shipment or twelve months from the date of start-up; whichever should occur first. Products which are purchased by the Company and resold without further processing by the Company are not covered by the Company's warranty. The Company shall pass to the Buyer whatever warranty the Company receives on such products. The Company will repair or replace, at its option, its products which prove to be defective within the warranty period, F.O.B. the factory. The Company's warranty shall be voided by any abuse, misuse, or neglect of the products by use not in accordance with the Company's published instructions. The remedies for any failure of the Company's product to meet warranty specified herein shall be those remedies herein and no others; these remedies being exclusive remedies as a condition of sale irrespective of the theory upon which any claim might be based, including negligence, breach of contract or strict liability.

IN ALL EVENTS, THE COMPANY WILL NOT BE LIABLE FOR AND WILL NOT REIMBURSE ANY LABOR, MATERIAL, OR OTHER REPAIR CHARGES INCURRED BY ANYONE OTHER THAN THE COMPANY ON ANY WARRANTY EQUIPMENT, UNLESS SUCH CHARGES HAVE BEEN SPECIFICALLY AUTHORIZED IN ADVANCE IN WRITING, BY THE COMPANY. THIS PARAGRAPH CONTAINS THE COMPANY'S SOLE WARRANTY. THE COMPANY MAKES NO IMPLIED WARRANTY, AND THERE IS NO IMPLIED WARRANTY OF MERCHANTABILITY OR FITNESS FOR ANY PARTICULAR PURPOSE.

DAMAGE LIMITATION

Under no circumstances shall the Company be liable for any loss of profits, down time, or any incidental, consequential, special, punitive, exemplary, enhanced, or indirect damages of any kind with respect to its products or the transaction by which its products are sold.

IN NO EVENT SHALL THE COMPANY'S AGGREGATE LIABILITY ARISING OUT OF OR RELATED TO THE EQUIPMENT OR THE TRANSACTION BY WHICH THE EQUIPMENT IS SOLD, WHETHER ARISING OUT OF OR RELATED TO BREACH OF CONTRACT, TORT (INCLUDING NEGLIGENCE), OR OTHERWISE, EXCEED THE TOTAL OF THE AMOUNTS PAID TO THE COMPANY WITH RESPECT TO SUCH EQUIPMENT.

EXCUSE

In no event shall the Company be liable for any loss or damage resulting from any delay or failure in shipment or other failure, loss or damage that is the proximate result of any act of government authority, revolution, riot, civil disorder or disturbance, act of enemies, delay or default in transportation, inability to obtain materials or facilities from normal sources of fire, flood, act of God, or any cause not within the reasonable control of the Company, whether of the class of causes enumerated or otherwise. Without limiting the generality of the foregoing, the Company may, without causing a breach or incurring liability, allocate goods which are in short supply irrespective of the reasons therefore among customers in any manner which the Company in its sole discretion deems advisable. If an event occurs that is beyond the control of the Company's performance and causes its cost of production to increase because of the delay, the Company may pass such increase on to the Buyer.



WEBSTER COMBUSTION TECHNOLOGY
619 Industrial Road - Winfield, KS 67156
Phone 620-221-7464 Fax 620-221-9447

sales@webstercombustion.com service@webstercombustion.com
www.webstercombustion.com